

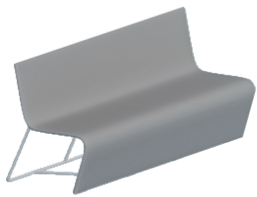


slim

design:
Grzegorz Niwiński
Jerzy Porębski
2005



Furniture with fine shape and characteristic smooth line. Exceptionally soft and small elegant sofas are ideal for hall, bedroom, reception or foyer. It's S shape stands for its slim figure.



d_186
g_73
w_84



d_125
g_73
w_84



d_67
g_73
w_84